

TRAIL HEADS & DESCRIPTIONS

Gates Farm Trail (Red Trail): This 2.5 mi trail can be accessed via a trailhead on Mountain Rd. Take a right out of the Sodexho Field parking lot and you will see the trailhead on your left about 20 ft up Mountain Rd. The trail is marked by red arrows. The south side of the trail was previously used as farm land while the north side runs along a black spruce swamp and then through the forested hills.

Place Trail: This 1.5mi trail is marked by red arrows and crosses through the Gates Farm Trail. The trail can be accessed via Gates Farm Trail or by the road to the water tower where the trail will be on your right. Signs along the trail created by students will guide you through the forest's history.

Old Kimball Trail (Blue Trail): Access this 1.5 mi loop from the Sodexho Field parking lot by following the road that runs behind Sodexho Field to the Rugby Field. Trail Head will be on your right in the corner of the Rugby Field. Trail is marked with blue arrows. The north section runs along the hilltops until you meet a dirt road (Old Kimball Rd.). Turn right and walk about 30 ft until you find a right turn marked by the blue arrows. Continue along the south section which runs along a wetland behind Lakeview. The loop takes you back to the Rugby field. **WARNING:** Be careful to follow the circular blue arrows as there are also old ski trails and logging trails not included in this map.

Pond Trail: Access to this 0.25 mi trail is located along the north shore of Pearly Pond, just down the hill from Peterson Hall, near the Medicine Wheel. Created as a class project, this trail offers a quiet place to enjoy the pond.

KEEP SAFETY IN MIND

HUNTING is NOT allowed on FPU property

Dress in BRIGHT COLORS from Oct.-Dec., as hunters have been seen on FPU property

NO MOTORIZED VEHICLES

Bring a friend and your cell phone

Tell someone where you are going

Leave no trace, keep our trails clean

Report any violations to campus safety immediately

CAMPUS SAFETY

EMERGENCY 899-5555

All Other Calls 899-4210

Rindge Police 899-5009

To learn more about Campus Recreation or to report trail issues, contact Doug Carty at (603) 899-4383

Snow shoes are available free for students at the bubble!

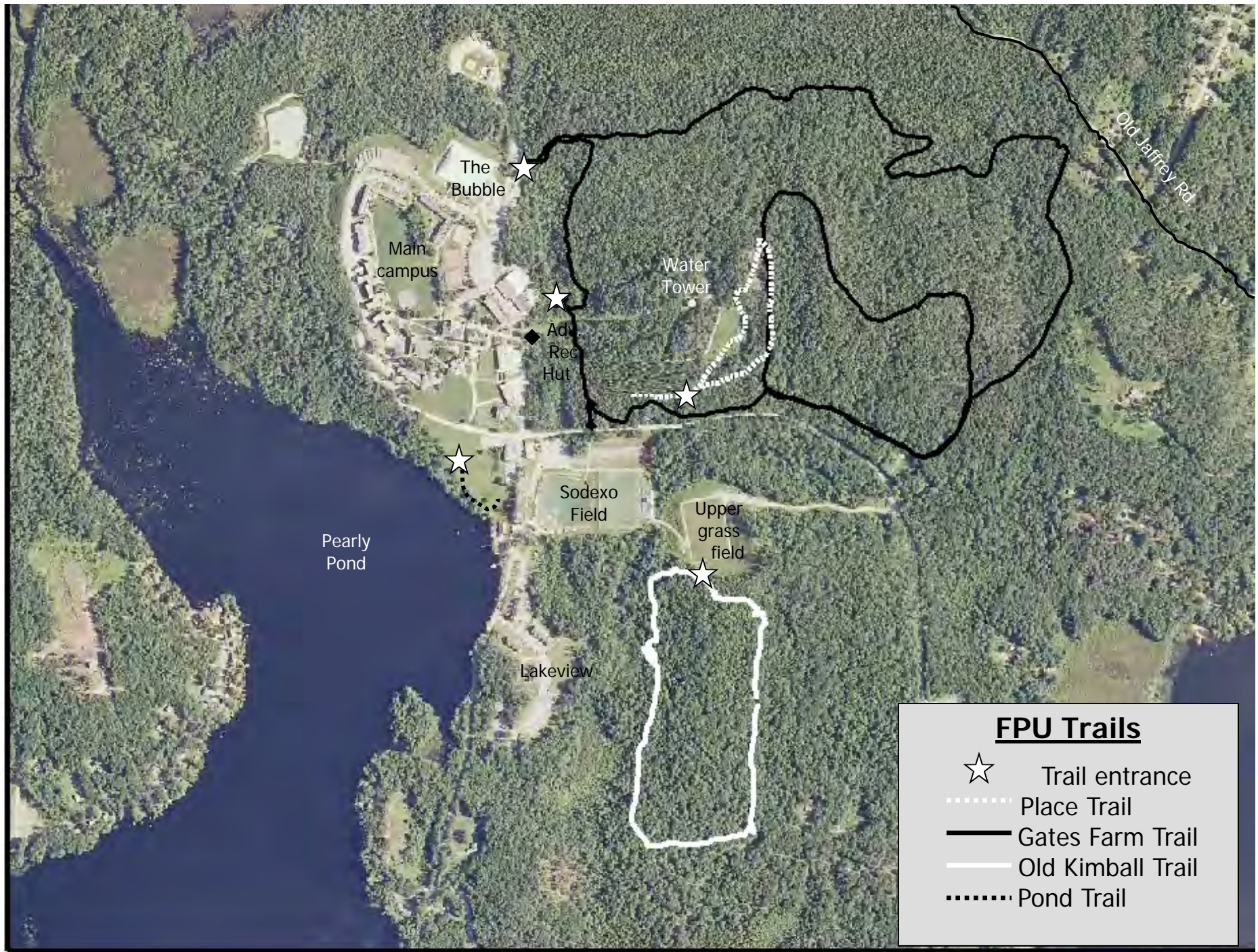
Rindge Campus Trail Map and Guide

*Explore over 1,000 acres
of campus land*



“In every walk with nature one receives far more than he seeks”

- John Muir



Map created by Jennifer Bell and Catherine Koning, 2012

