

YOUR MEMBER
SavingsSM

LENSCRAFTERS[®]

PEARLE VISION[®]

Sears
Optical

OPTICAL

Now in Maine and New Hampshire: Save 35% on complete pairs of glasses

Great news! Harvard Pilgrim now has an EyeMed Select discount eyewear program administered by EyeMed Vision Care, which offers access to LensCrafters, Sears Optical, Target Optical, most Pearle Vision locations, JC Penney Optical and other private practitioners. Simply show your Harvard Pilgrim membership card when making your purchase to receive savings at any of these provider locations in Maine and New Hampshire!

35% off your next purchase of a complete pair of glasses*

Choose from any frame available at the select location, any standard plastic lenses (single, bifocal or trifocal lenses) and lens options like tint, UV, scratch-resistant and anti-reflective coatings. While an eye exam at one of the participating locations is not necessary, you must submit a valid written vision prescription to receive these prescription eyewear savings.

Savings on other eyewear products

If you're planning to replace your current frames or lenses only, you'll save 20% on any frame, lens or lens option when purchased separately. Plus, take 20% off any eyewear accessory, like lens cleaners, eyeglass cases, non-prescription sunglasses and much more. You'll save 15% off the retail price on conventional contact lens.**

If you're planning to have an eye exam

Coverage for your routine eye exam varies according to your specific health plan design. To confirm coverage, and before scheduling your appointment, please refer to your Schedule or Summary of Benefits or call Member Services. Remember, confirm that the ophthalmologist or optometrist is a participating Harvard Pilgrim eye exam provider and not just contracted with us for eyewear savings. Please visit www.harvardpilgrim.org or call us prior to booking your appointment.



Turn over for more ways to save. ▶▶

* Must be purchased in the same transaction to receive the full discount. 35% discount on lenses and options only available when a complete pair of glasses (frames, lenses and lens option) is purchased in the same transaction. Items purchased separately will be discounted at 20% off retail price. Discount not available on frames that the manufacturer prohibits any discounts.

** Contact lens fitting fees are not a covered benefit under your Harvard Pilgrim medical plan and you will be billed separately. Discount not available for disposable contact lenses.

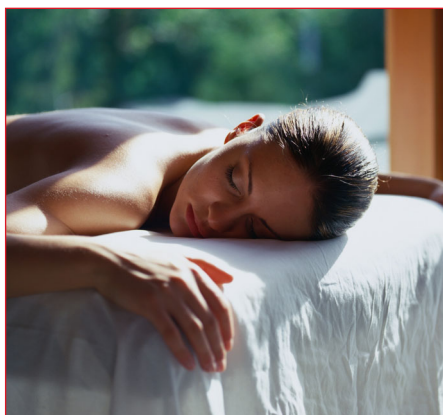
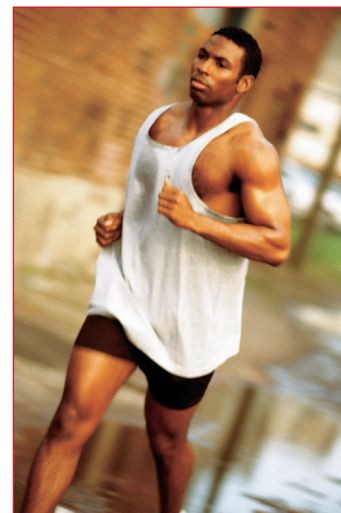


This information refers to products and services offered by Harvard Pilgrim Health Care and its affiliates, Harvard Pilgrim Health Care of New England and HPHC Insurance Company.

More great discounts from head to toe!

Your Member Savings entitles you to a variety of discounts on many different health related products and services – everything from bicycle helmets to visits to participating acupuncturists and massage therapists.

Harvard Pilgrim members also can save 15% off all regularly priced footwear at Runner's Alley, "New Hampshire's *Only* Running Only Store." Finding the right running shoes is valuable to your good health, as it helps you to avoid potential injuries like joint pain, shin splints and bruising. With two locations, one in Manchester and one in Portsmouth, Runner's Alley staff will do their best to find you a healthy fitting shoe.



To find all the great discounts available to you

Visit www.harvardpilgrim.org and click on Your Member Savings. You can also call us:

- Current members call (888) 333-4742
- If you're not yet a member, call (800) 848-9995
- For TTY service, call (800) 637-8257

